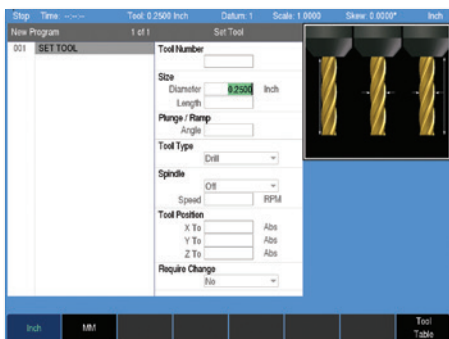
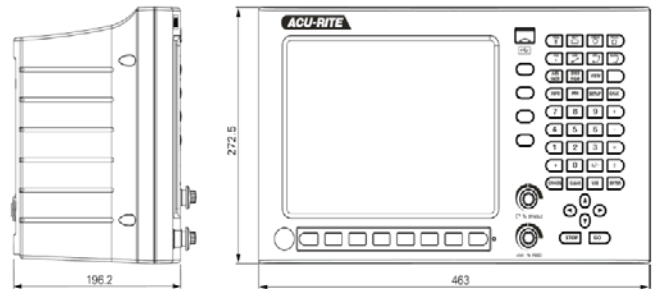


# ACU-RITE® MILLPWR<sup>G2</sup> Control Systems

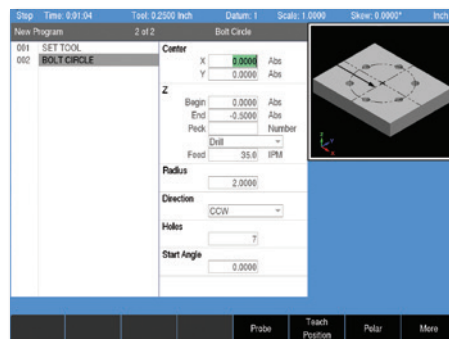


The MILLPWR<sup>G2</sup> is a contouring control that enables you to program conventional machining operations right at the machine in an easy-to-use conversational language. It is designed for both knee mills and bed mills with up to 3 axes of closed loop controlled.



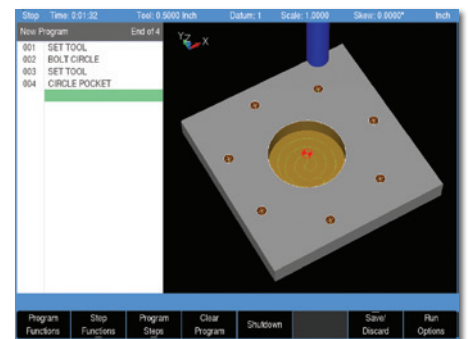
### Tool Step

All programs begin with the tool. Parameters are entered in the middle column and are graphically supported in the right column for each field



### Cycle Select

Select a cycle to be created. In this case, a circular bolt hole pattern. Once the data has been entered into the form press the USE hard key.



### 3D Graphics

Tool paths are also displayed in 3D graphics that can be rotated and manipulated. The program is ready to run. Simply press "GO."

MILLPWR <sup>G2</sup> Technical Data	
<b>DRO Mode</b>	<ul style="list-style-type: none"> <li>• Multiple Datums (Fixture Offset): 99</li> <li>• Skew</li> <li>• Zero Reset</li> <li>• Near Zero Warning</li> </ul>
<b>PGM Mode</b>	<ul style="list-style-type: none"> <li>• Estimated Machining Time</li> <li>• View Graphics: 2D Line / 3D Line / 3D Solid</li> <li>• Block Form w/ User Override</li> <li>• Custom Pocket &amp; Islands, Ramp Feed &amp; Optimized Path</li> <li>• Replication (Repeat, Rotate, Mirror)</li> <li>• Engrave (Line / Arc)</li> <li>• Program Manager Navigation Tree w/ Program Type Filter</li> <li>• Long Program Names</li> <li>• Program Preview: Listing &amp; Graphic w/ Estimated Machining Time</li> <li>• Explode Step: Hole Patterns &amp; Repeat / Rotate / Mirror</li> <li>• Reverse (Step / Path)</li> </ul> <ul style="list-style-type: none"> <li>• Shift Steps</li> <li>• Auto Save (Program)</li> <li>• Program Size Limit (MPT only): 9999 Steps</li> <li>• DXF File Import</li> <li>• G-code Program: w/ Graphics Support/ Simple Edit</li> <li>• On-Screen Help: User Manual Viewer (Text &amp; Graphics)</li> <li>• Parts Counter &amp; Clock</li> <li>• Manual / Auto Z Control: 3 Axes</li> <li>• Optional Stop (G-code Only)</li> <li>• Feed Override: Potentiometer</li> <li>• Error Compensation: Linear &amp; Bidirectional Non-linear</li> </ul>
<b>Processor</b>	1.4 GHz Dual Core Celeron® Processor
<b>Display</b>	12.1-inch 1024 x 768 Color LED
<b>Internal Storage</b>	2.5 GB CFAST (SATA) User
<b>Remote Pendant (Stop / Go)</b>	DC Kits Only
<b>Remote Handwheel</b>	AC Kits Only
<b>Housing</b>	Die Cast Metal Bezel & Enclosure (Back Sheet Metal)
<b>Connections</b>	Ethernet, USB (x2)
<b>Accessories</b>	<ul style="list-style-type: none"> <li>• Linear Feedback for Coupling Z (Quill) and W</li> <li>• Electronic Edgefinder</li> <li>• Offline Software</li> </ul>
<b>Weight</b>	~7.7 kg
<b>Electrical Requirements</b>	AC 100 V to 240 V (±10 %), 50 Hz to 60 Hz (±2 %)
<b>Operating Temperature</b>	0° to 45° C (32° to 113° F)
<b>Storage Temperature</b>	-20° to 70° C (-4° to 158° F)
<b>Protection</b>	IP 54 (Front) / IP 40 (Back)

With more than one million in use today, ACU-RITE® Precision Glass Scales withstand the elements of even the harshest machine shop environments. Built to resist changes in size, shape, or density due to temperature and humidity variations, this stability provides exceptional accuracy, resulting in tighter workpiece tolerances.

ACU-RITE® scales are available in travel lengths from 1"–120" and in resolutions from 0.5µm (.00002") to 5µm (.0002").



# ACU-RITE®

**HEIDENHAIN CORPORATION**

333 East State Parkway  
Schaumburg, IL 60173-5337 USA

☎ (847) 490-1191

☎ (847) 490-3931

✉ info@heidenhain.com

www.acu-rite.com

 **Certifications**

ISO-9001, UL, CSA, CE

ACU-RITE® is a registered trademark of HEIDENHAIN CORPORATION  
Rev. 05/2020