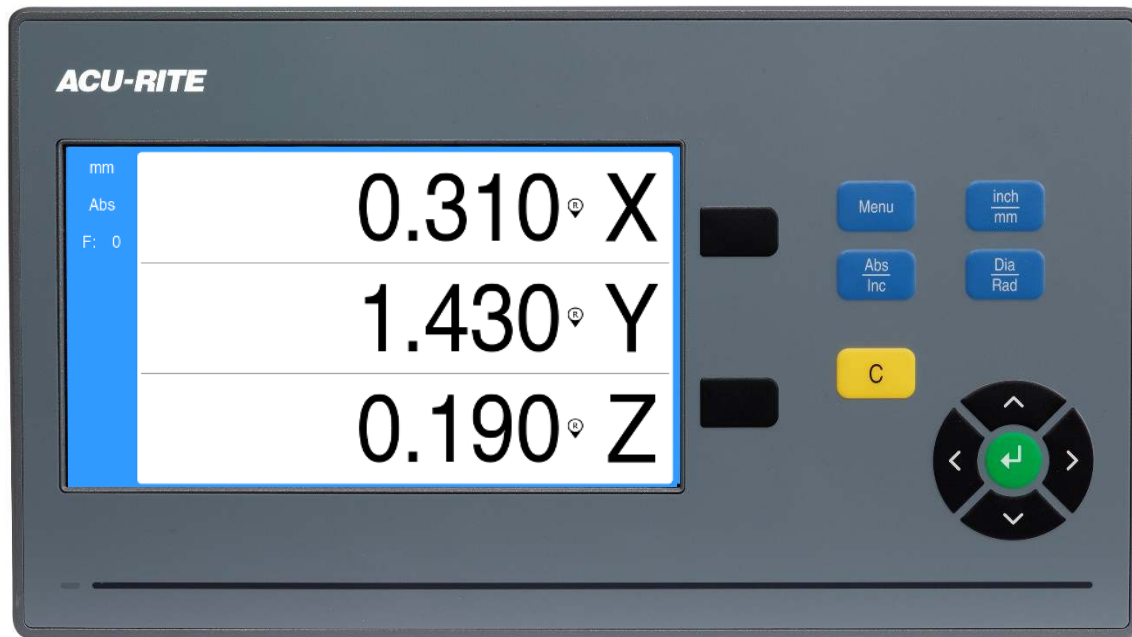


Changing the Count Direction on a DRO10X



Changing the Count Direction on a DRO10X

Note which port the encoder you need to change is plugged into. You will need this information for later.



Changing the Count Direction on a DRO10X

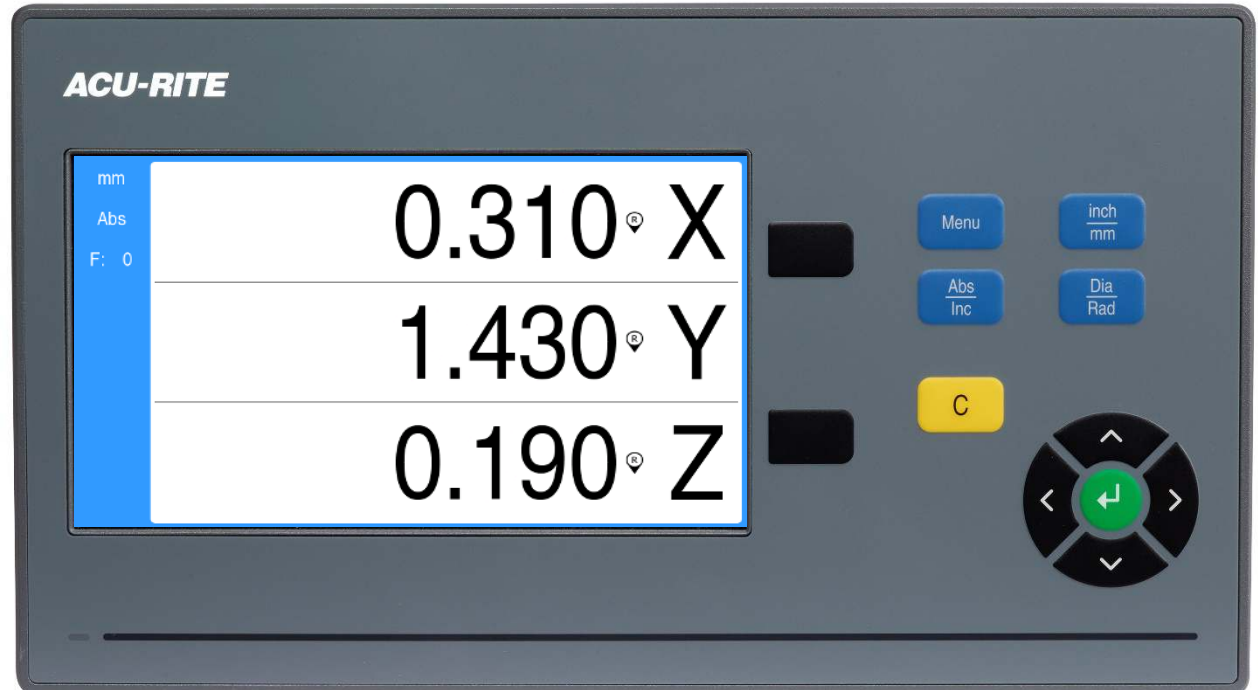
Power up the box.
When prompted,
press any key to
continue.



The power switch is located on the back,
directly under the power cord.

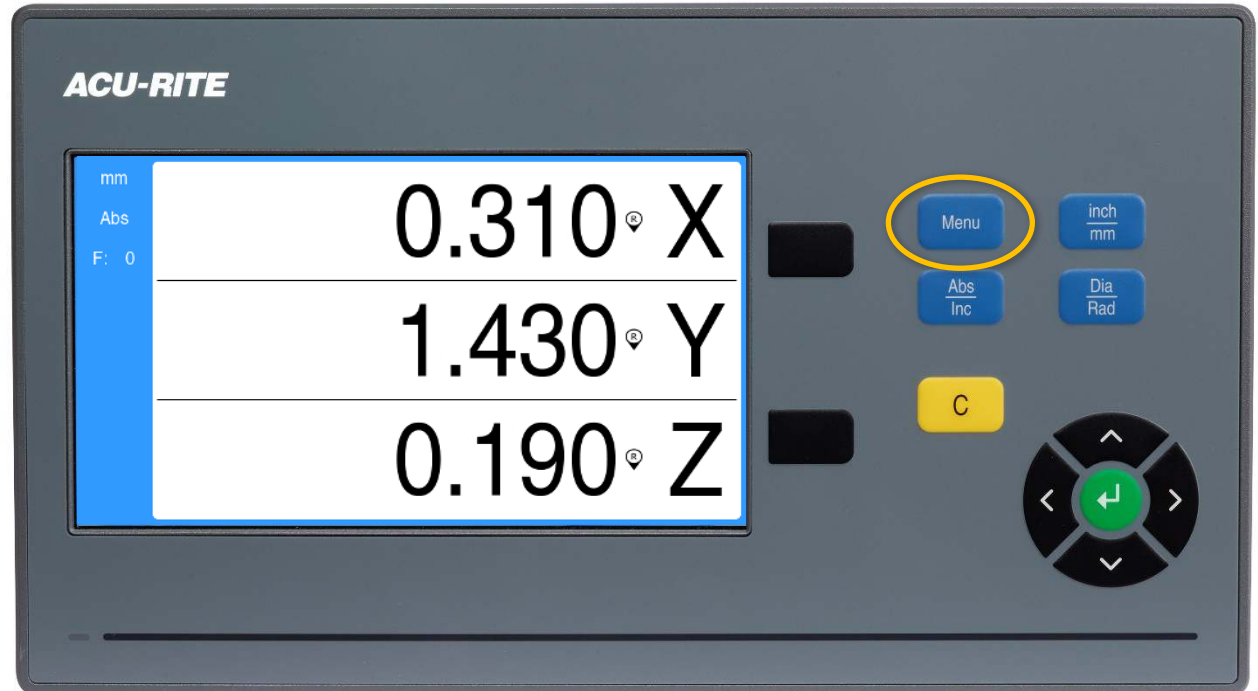
Changing the Count Direction on a DRO10X

Reference your encoders by moving each axes so they cross at least 2 reference marks on the glass (~3").



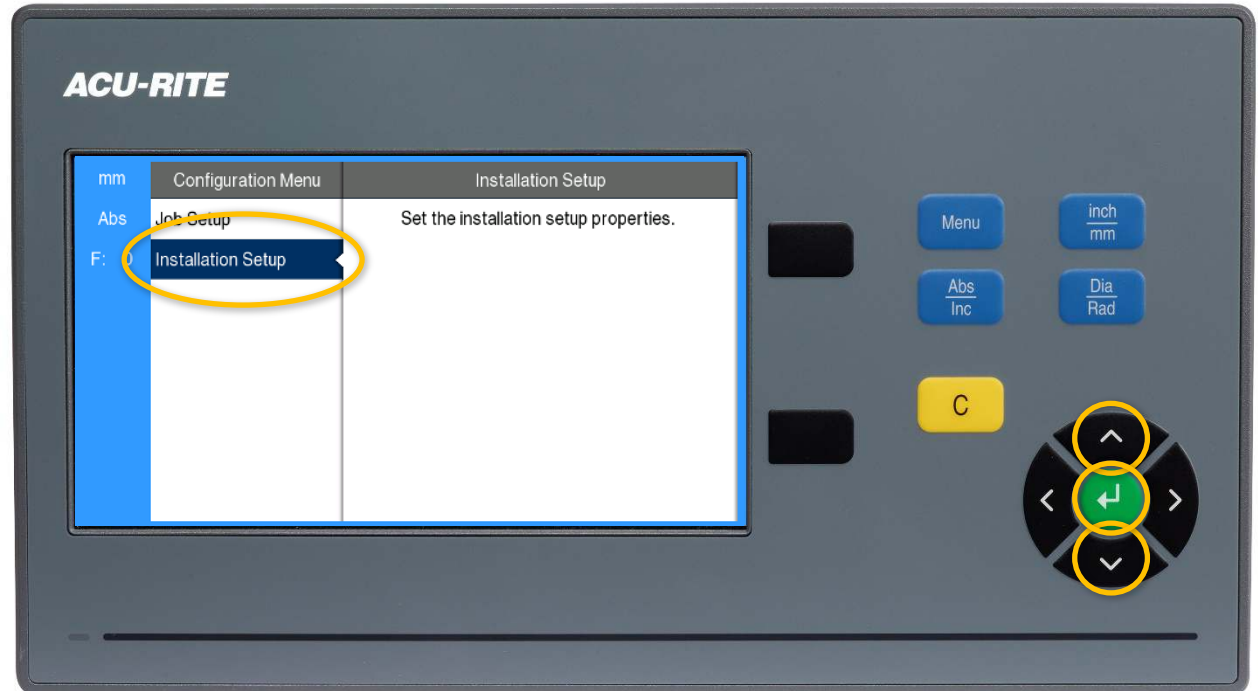
Changing the Count Direction on a DRO10X

Press the Menu button.



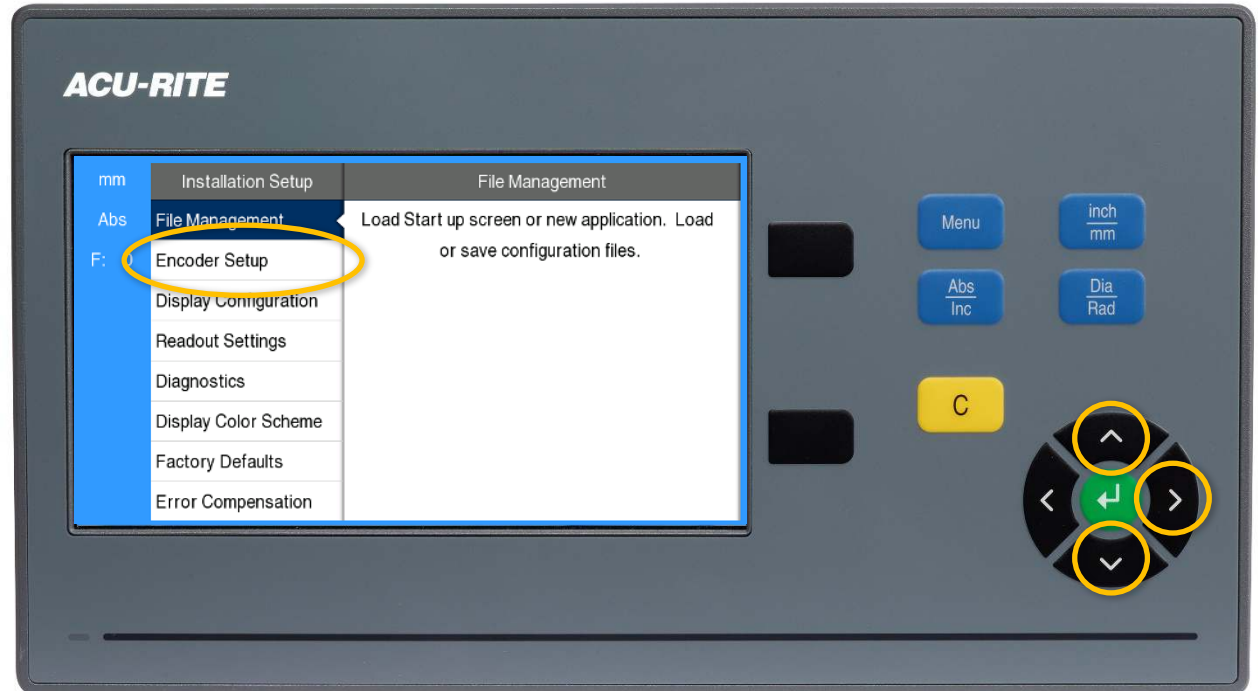
Changing the Count Direction on a DRO10X

Use the up and down arrow keys to highlight the Installation Setup menu, and then press enter.



Changing the Count Direction on a DRO10X

Use the up and down arrow keys to highlight the Encoder Setup menu, and then press the right arrow key.



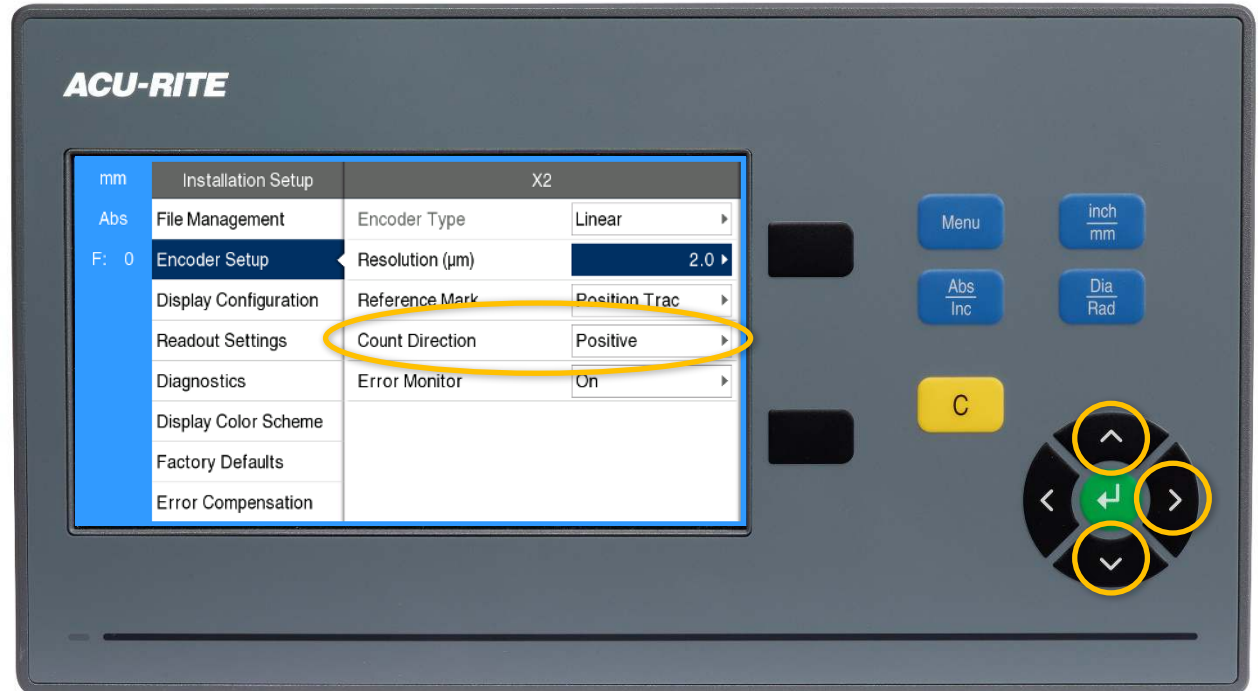
Changing the Count Direction on a DRO10X

Use the up and down arrow keys to highlight the port the encoder you want to change resolution on is plugged into, and then press enter.



Changing the Count Direction on a DRO10X

Use the up and down arrow keys to highlight the Count Direction change menu, then press the right arrow key.



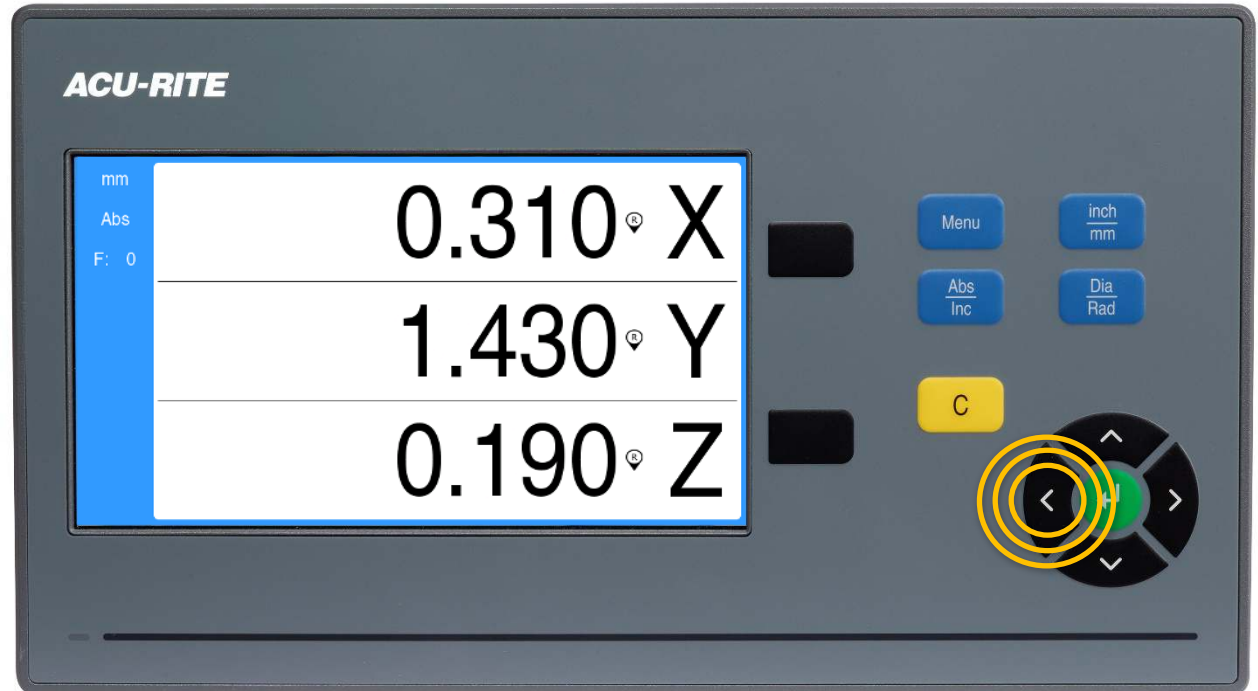
Changing the Count Direction on a DRO10X

Use the up and down arrow keys to highlight the opposite Count Direction, and then press enter twice.



Changing the Count Direction on a DRO10X

Hit the left arrow key three times to get back to the DRO screen. Repeat this sequence for additional encoders as needed.



ACU-RITE®

What's in your shop?

ACU-RITE's NEW complete line of performance-driven
Digital Readout Systems for all of your manual machine applications:
Milling, Turning, Grinding, Boring, EDMs



www.acu-rite.com



Digital Readout Systems | Precision Linear Encoders | MILLPWR® CNC Retrofit Packages for Knee and Bed Mill Machines
333 E. State Parkway, Schaumburg, IL 60173 | (847) 490-1191

ACU-RITE®