

USB Protection Module

ACU-RITE® Installation and Setup Instructions


1.1 Introduction

- ACU-RITE CNC products provide off-line software. The off-line software is a convenient way to do training, write part programs and simulate machine behavior using a standard Windows® computer. Features and functionality are virtually identical to that of the control itself.
- The use of the off-line software is protected via a USB protection module.
- There are three available USB modules based on the number of users:
 - ID 1105879-01 Single-user kit
 - ID 1105880-01 14-user network kit
 - ID 1105881-01 20-user network kit
- Each ID includes the corresponding USB protection module and this document.

1.2 Installing a single-user USB module

A single-user USB module can be used for a stand-alone installation of off-line software on a single computer.

- In this configuration, the off-line software is installed on a Windows® computer.




Notice
Install the off-line software on the computer prior to installing the USB module.

- The single-user USB module is inserted into an available USB port of that computer.
- Once the software is installed, and the USB module is inserted, no further actions are necessary for proper operation. Please refer to the CNC product's User Manual for details on the off-line software.

1.3 Installing a multi-user network USB module

A multi-user network USB module can be used for a site-wide installation of off-line software on multiple computers.




Notice
Basic computer and networking skills are required to properly install the software for a multi-user USB module. These steps would typically be performed by a network administrator.

- In this configuration, the off-line software is installed individually on multiple computers, and the multiple-user network USB module is inserted into an available USB port of a designated license server on the network.
- ▶ Visit the ACU-RITE website at <http://www.acu-rite.com> to download the file that contains the software for the network USB module.

- The required software is included in the compressed file named "NetworkLicenseServer.zip".
- ▶ Download and extract the contents of the ZIP file to a location on the target server.
- ▶ Install the driver software on the server prior to inserting the USB module.
- Section 1.4 provides further instructions to install the driver software, please continue.

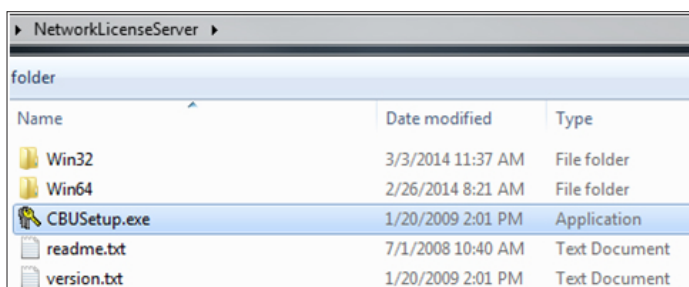
1.4 Installing the USB driver software



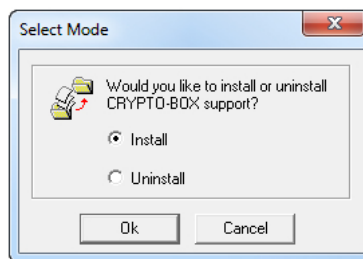
Notice
This section applies only to multi-user network USB protection modules.

The driver software for the USB hardware must be installed on the server in order for the USB module to be correctly recognized by the off-line software.

- ▶ Run the driver installation package named "CBUSetup.exe".



- ▶ Follow the prompts to complete the installation.



- ▶ Insert the USB protection module into an available USB port on the server.
- The hardware and necessary drivers will be automatically recognized and applied.
- ▶ Section 1.5 provides further instructions to install the license server daemon software, please continue.

1.5 Installing the network daemon software



Notice

This section applies only to multi-user network USB protection modules.

A daemon application or service must be installed and active on the server in order for the multiple client computers to be able to find and use an available license for the CNC off-line software.

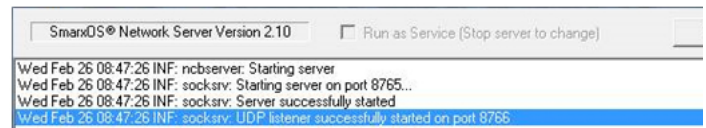
- ▶ Refer to the location where the downloaded software was extracted on the server. There you will find two folders; Win32, and Win64

NetworkLicenseServer				
folder				
Name	Date modified	Type	Siz	
Win32	3/3/2014 11:37 AM	File folder		
Win64	2/26/2014 8:21 AM	File folder		
CBUSetup.exe	1/20/2009 2:01 PM	Application		
readme.txt	7/1/2008 10:40 AM	Text Document		
version.txt	1/20/2009 2:01 PM	Text Document		

- If the target server is running a 64-bit (x64) version of Microsoft® Windows®, then the contents of the Win64 folder must be used.
- If the target server is running a 32-bit (x32) version of Microsoft® Windows®, then the contents of the Win32 folder must be used.
- ▶ Using the appropriate folder for the server’s architecture, run the “CBIOSrv.exe” or “CBIOSrv64.exe” application.

NetworkLicenseServer > Win64				
folder				
Name	Date modified	Type	Siz	
AdminApp64.exe	12/18/2008 1:54 PM	Application		
CBIOSrv.cfg	11/13/2009 4:56 PM	CFG File		
CBIOSrv64.exe	3/12/2010 1:53 PM	Application		
CBIOSrv64.log	2/26/2014 8:26 AM	Text Document		
CbiosSrv64.srv	3/18/2010 6:43 PM	SRV File		
readme.txt	3/18/2010 6:43 PM	Text Document		

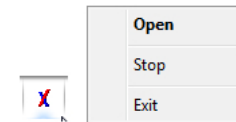
- A dialog confirming a successful start of the “SmarxOS® Network Server” will be displayed.



- In this dialog, there is a button that can be used to “Start” or “Stop” the running license server.

Alternatively, it is recommended to enable the checkbox “Run as Service,” which will allow the license server to start automatically when the physical server is powered up and logged into. This prevents the need to manually start the licensing server application each time the physical server is restarted, etc.

- The dialog can also be viewed by right-clicking the icon in the system task tray.



- Once the software is installed, and the USB module is inserted, no further actions are necessary for proper operation.
- Please refer to the CNC product’s User Manual for details on the off-line software.

HEIDENHAIN CORPORATION

333 East State Parkway
 Schaumburg, IL 60173-5337 USA
 ☎ +1 (847) 490-1191
 📠 +1 (847) 490-3931
 E-Mail: info@heidenhain.com
 www.heidenhain.com